

NY vATIS MINOR AIRPORTS PACKAGE

Version
2004

Release Date
29 Mar 2020



INSTALLATION

In order to load the profile in vATIS, simply save the facility profile (.gz file) in your preferred location. Then run vATIS and click the “**Import**” button. A file browser dialog will show allowing you to browse to the location of the facility file.

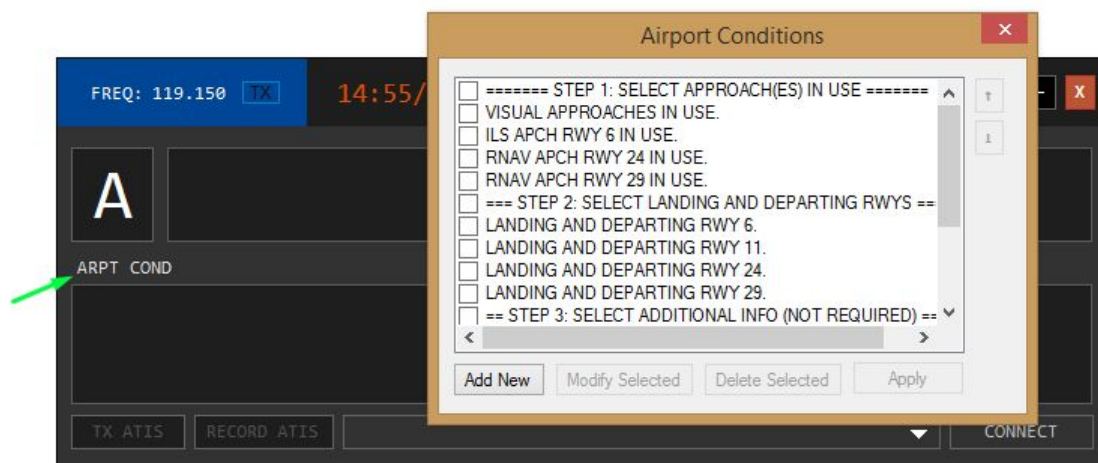
More information on how to use vATIS can be found here: <https://vatis.cloudw.io/doc>

USAGE

All profiles included in this package, except TEB and HPN, are set up to be voice recorded. This means that you will need to manually record the ATIS when it updates, just like in real world. TEB and HPN utilizes D-ATIS in real world and as such you do not need to manually record the ATIS.

These manually voice recorded ATISs are set up slightly different than the other profiles. In order to record the ATIS, you will need to click the “**ARPT COND**” button as shown in the picture below. A window will then populate. Here you will need to select the configuration by clicking on the square next to the relevant item. Follow these 3 steps:

1. Step 1: Select approach(es) in use
2. Step 2: Select landing and departing runways
3. Step 3: Select additional information as required



Just like in the non-voice recorded ATISs, you also have the option to add pre-defined NOTAM messages by clicking the **“NOTAM MSG”** button.

Finally, you can click the **“CONNECT”** button and record the ATIS use the **“RECORD ATIS”** button.

Important note! As of writing this, the manually voice recorded ATISs seem to NOT work on the VATSIM network. If you are experiencing issues, you can temporarily change the profile to an automatically recorded ATIS. You can do this by hitting CTRL+F. A window will populate. Navigate to the “Configuration” tab and uncheck “Voice Recorded ATIS”. Click “Apply” and “OK”. The ATIS will now be automatically recorded, just like in the major airport profiles.

SUPPORT

If you have any suggestions or find any issues, you can submit it on the NYARTCC website “Issue/Suggestions” section available here: <https://nyartcc.org/createissue>

If you have any questions, you can ask them on the NYARTCC forums (<https://www.nyartcc.org/forum>) or send an email to zny-fe@vatusa.net.